

WINTER PARK BUSINESS CENTRIC OFFICE CONDO AVAILABLE!

2265 LEE ROAD • WINTER PARK, FL 32789



FOR SALE:

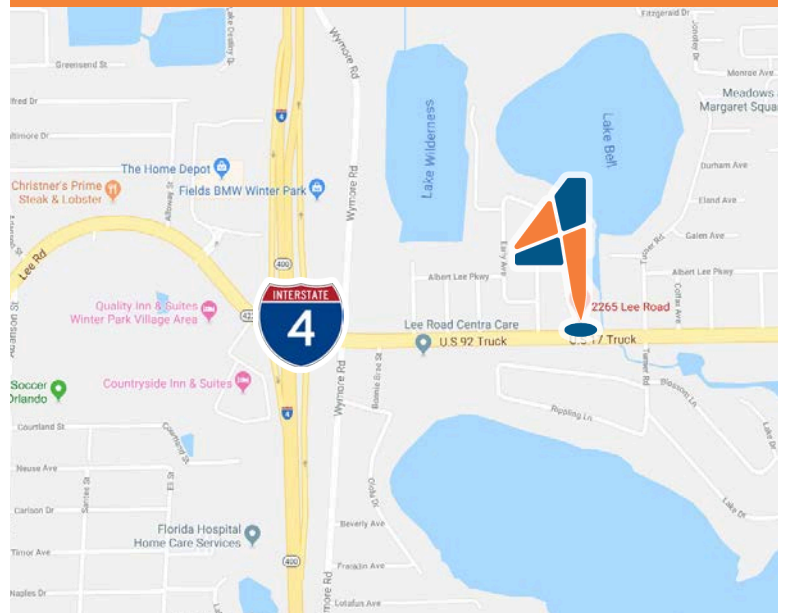


4ACRE Commercial Real Estate is pleased to bring to market 2265 Lee Road in the ever-expanding Winter Park market. Centrally located between Winter Park and Maitland offices and amenities, it is perfectly situated to fit your professional needs. This office condo comes equipped with a waiting room and reception area, multiple private offices, copy room and kitchen. It's well-maintained common areas and landscaping create a scenic atmosphere amidst the bustling Lee Road. Don't miss out on this opportunity in one of the most highly demanded areas in the region!

Property Highlights:

- Located in prominent Winter Park
- Immediate Access to I-4 ramps
- Abundant private parking
- Central to Winter Park and Maitland amenities
- **PRICED TO SELL!**

SALE PRICE \$208,650.00
PARKING 4/1000
SUITE SIZE.....1,070 RSF



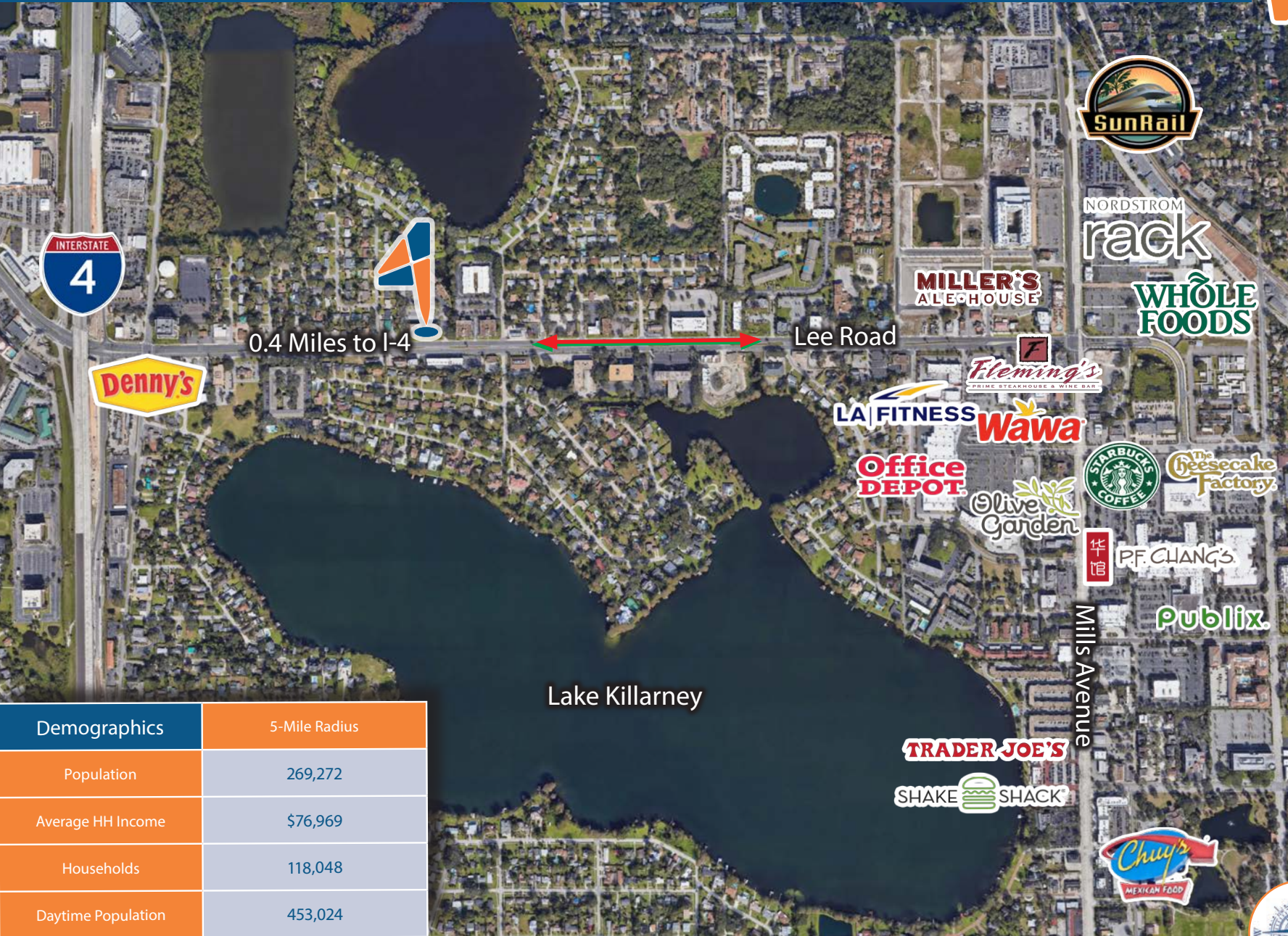
CONTACT US

Nicholas Fouraker CCIM
Nick@4acre.com
407-601-1466

Samuel Gaslin
Sam@4acre.com
904-505-5282

*The information contained herein has been given to us by the owner of the property or other sources we deem reliable. We have no reason to doubt its accuracy, but we do not guarantee it. All information should be verified prior to purchase or lease. Unless otherwise noted, the property is being offered as-is, where is, with all faults.

2265 Lee Road • Winter Park, FL 32789



Demographics	5-Mile Radius
Population	269,272
Average HH Income	\$76,969
Households	118,048
Daytime Population	453,024



2265 Lee Road Winter Park, FL 32789 • Parking



0.4 Miles to I-4

Lee Road





Main Entrance & Waiting Room



Reception Area



Private Offices & Hallway

